

BUSINESS COMMUNITY ANTI-POVERTY INITIATIVE

I N S A I N T J O H N

About the Business Community Anti-Poverty Initiative (BCAPI)

MISSION

By working together with people living in poverty, community organizations and government, BCAPE is dedicated to substantially reducing the number of people who live in poverty in Greater Saint John.

PRINCIPLES

- Public commitment to reduce poverty
- Community and business leaders committed to action
- Listen to and involve people living in poverty
- Focus on longer-term “break the cycle” solutions
- Emphasis on partnerships
- Sustainable, comprehensive and holistic approaches
- Business approach - research, analyze, plan, act and measure
- Accountable to our stakeholders and our community
- Catalyst (not “service”) role
- Raise the profile of poverty and our partners, not BCAPE
- Minimize requests to government until planning is complete

ROLE

BCAPE is a “CATALYST”, undertaking to provide:

- Leadership
- New thinking
- Business expertise
- Influence
- Assistance to community organizations in accessing resources and financial support
- Facilitation / coordination

FOCUS

Breaking The Intergenerational Cycle Of Poverty

BCAPE’s primary focus is increasing the opportunities for children, youth and single-parents, who live in poverty, to succeed in school and achieve employment that pays a living wage.

BCAPE’s secondary focus is the provision of adequate resources in low income neighbourhoods and schools to enable low income families to improve their wellbeing, work toward economic self-sufficiency, and feel valued as contributing members of a vibrant community.

GOALS (2010 - 2015)

- Enable children who live in poverty to succeed in school and break the poverty cycle.
- Reduce the incidence of teenage pregnancy by enhancing youth programs that prevent pregnancy and improve well-being.
- Help “at risk” teens and young adults complete their high school education, be ready for post-secondary pursuits and the workforce.
- Develop services that enable young parents to continue their education and achieve adequate incomes.
- Help single parents get into the workforce and off social assistance.
- Promote solutions to the lack of adequate and affordable housing in Saint John, the need for mixed income neighbourhoods, and the regeneration of priority neighbourhoods.
- Help others understand poverty, how it can be reduced and prevented, what is working in Saint John, and BCAPE’s “catalyst” role.
- Facilitate a community-led and comprehensive approach to poverty reduction that involves all sectors of the community.
- Foster the continued growth of BCAPE.

Breaking the Poverty Cycle in Saint John

BCAPI's Major Sponsors

Benefactor



J.D. IRVING, LIMITED

Patron



Champion



Partner



10-Year Poverty Reduction Trend

Incidence of Poverty	Location	1996	2001	2006	2012*
For Total Population	City of Saint John	27%	24.5%	20.8%	Coming Soon
	Greater Saint John (CMA)	20%	17.6%	14.7%	
	Province of NB	19%	15.7%	13.5%	
For Single Parent Families	City of Saint John	73%	68.0%	NA	
	Greater Saint John (CMA)	66%	60.4%	NA	
	Province of NB	61%	51.0	NA	
For Children & Teens under 18 years of age	City of Saint John	35%	33.0%	28.3%	
	Greater Saint John (CMA)	24%	21.9%	18.0%	
	Province of NB	22%	18.0%	16.2%	
For Children under 6 years	City of Saint John	42%	35.0%	34.0%	
	Greater Saint John (CMA)	30%	24.0%	21.0%	
	Province of NB	26%	20.0%	18.0%	

Sources: Statistics Canada Low Income Cut-Off (LICO before taxes) Data; Canadian Council on Social Development - Urban Poverty in Canada Reports
*2012 figures were not available at time of publication.

Greater Saint John Poverty Reduction Strategy

New ways of working together to break the poverty cycle

Strategy Elements

Neighbourhood Revitalization

- Resident mobilization and training
- Housing strategy
- Social, physical, and economic improvements
- Mixed income neighbourhoods

Single Parents

Comprehensive programs and supports:

- Adequate and affordable housing strategy
- Childcare
- School completion
- Parenting
- Health and wellness

Children and Youth

Level the playing field:

- Early-learning centres
- School supports / community schools
- Youth programs / engagement / leadership
- Coordination of services

Workforce Participation

- Multiple pathways and supports
- Remove barriers: childcare, transportation, health insurance, tuition
- Employer leadership
- Living wage replaces minimum wage

How we do it



BCAPI Volunteers

Many thanks to the current volunteers and all others who have volunteered in the past.

BCAPI Executive

- Bill Gale, BCAPI Founder, retired RBC bank executive
- Gary Lawson, BCAPI Past Chair, Lawson and Creamer, Lawyers
- Tom Gribbons, BCAPI Chair, RBC Dominion Securities
- Blair Northcott, Treasurer, Grant Thornton
- Nancy Creamer-Ervin, Fundraising Chair, TD Waterhouse
- Sheri Somerville, Communications Chair, Pure Symmetry Public Relations
- Bob Vincent, SPFWG Co-Chair, Stewart McKelvey
- John Wheatley, SPFWG Co-Chair, John B. Wheatley and Associates

Education to Employment Working Group

- John Adams, Chair, Stantec
- Sharon Amirault, First Steps
- Scott Crawford, The Resource Centre for Youth (TRC)
- Chris Edwards, Canadian Cable Systems Alliance
- Randy Hatfield, Human Development Council
- Danny Jardine, Horizon Health Network
- Pat McGill, Horizon Health Network
- Tina Melvin, Innovatia
- Mary Reeves, Education Consultant
- Susan Tipper, J.D. Irving, Limited

Fortis Charity Golf Classic Organizing Committee

- Paulette Hicks, Chair, Fortis Properties
- Brandi Cooper, Fortis Properties
- Chris Howes, Select Printing
- Debbie Johansen, Fortis Properties
- Debbie Touche, Fortis Properties
- Angela Jesso, Fortis Properties

Housing Working Group

- Gregor Hope, Chair, retired businessman
- Peter Asimakos, Uptown Saint John Inc.
- Bob Boyce, Architect
- Toby Bodechon, NB Dept. of Social Development
- Kim Chenier, Horizon Health Network
- Francine DiMambro, Canada Housing & Mortgage Corporation
- Randy Hatfield, Human Development Council
- Kit Hickey, Housing Alternatives & Rehabitat Inc.
- Jody Kliffer, City of Saint John
- John Lawson, Lawson Property Management
- Mark Leger, Saint John Homelessness Committee
- Brian Marks, NB Dept. of Social Development
- Bob McVicar, Exit Realty
- Debbie Miller, Scotia Bank
- Barry Moore, AVIDE
- Brenda Murphy, Urban Core Support Network
- Kurt Peacock, Enterprise SJ
- John Rocca, The Rocca Group
- Narinder Singh, Saint John Non-Profit Housing Inc.
- Rick Turner, Hughes Surveys and Consultants

BCAPI Single Parent Family Working Group

- Bob Vincent, Co-Chair, Stewart McKelvey
- John Wheatley, Co-Chair, John B. Wheatley and Associates
- Rob Belliveau, Emera New Brunswick
- Brice Belyea, CANLink Global Inc.
- Lino Celeste, retired CEO/Chair of Aliant
- Nancy Creamer-Ervin, TD Waterhouse
- Regena Farnsworth, UNB Saint John
- Bill Gale, retired RBC executive
- Tom Gribbons, RBC Dominion Securities
- Charles Harling, Bell Aliant
- J.K (Jim) Irving, J.D. Irving, Limited
- Gary Lawson, Lawson Creamer, Lawyers
- Robert MacKinnon, UNB Saint John
- Derek Oland, Moosehead Breweries Limited
- Gerry Pond, Mariner Partners

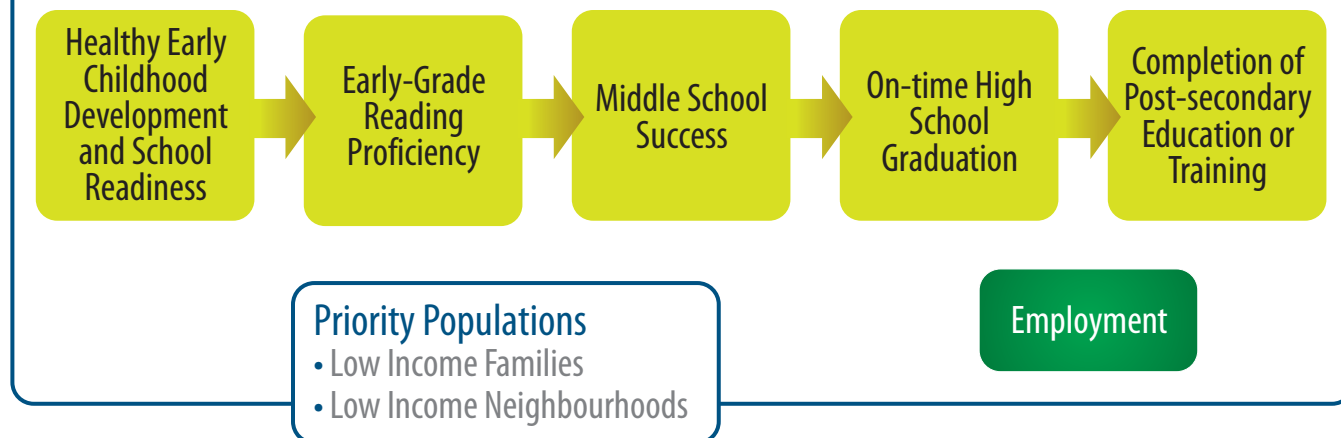
Vibrant Communities Saint John Leadership Roundtable

- Hon. Erminine Cohen, VCSJ Patron, Retired Senator
- Regena Farnsworth, VCSJ Chair, University of New Brunswick Saint John
- Elaine Daley, VCSJ Treasurer, Belyea, Colwell and Associates
- Monica Chaperlin, VCSJ Coordinating Committee, BCAPI
- Randy Hatfield, VCSJ Coordinating Committee, Human Development Council
- Brenda Murphy, VCSJ Coordinating Committee, Urban Core Support Network
- Bill Bastarache, Common Front for Social Justice/John Howard Society
- Fern Bennett, Make Poverty History
- Juanita Black, Around the Block, VCSJ
- Shilo Boucher, YMCA-YWCA
- Sarah Brown, Fusion/ KPMG
- Michael Butler, School District 8
- Dan Cameron, NB Department of Social Development
- Lisa Chamberlain, Village Neighbourhood
- Michel Côté, ARCF de Saint-Jean
- Debbie Cooper, Saint John Boys and Girls Club
- Ivan Court, Mayor, City of Saint John
- Francine DiMambro, Canadian Mortgage and Housing Corporation
- Sister Roma De Robertis, Sisters of Charity
- Penni Eisenhauer, VCSJ
- Elizabeth Flemming, for Trevor Holder, MLA
- Debbie Godlewski, Public Health Services, Horizon Health Network
- Gregor Hope, Housing Working Group, BCAPI
- Carl Killen, MLA
- Lyn King, Community Representative
- Mary LeSage, People Unite Lower South End
- Grace Losier, Mayor, Town of Grand Bay - Westfield
- Wendy MacDermott, Greater Saint John Area United Way
- Brian Marks, NB Department of Social Development
- Bonnie McGraw, St. Joseph's Community Health Centre
- Sister Mary Beth McCurdy, Sisters of Charity
- Sara Mudge, Saint John Board of Trade
- Faith Nagle, for Rodney Weston, MP
- Clare Northcott, Greater Saint John Community Foundation
- Mary Eileen O'Brien, SJ Board of Police Commissioners, Carleton Law Group
- Shirley Robinson, Resident, Old North End
- Rob Salloum, St. Luke, St. George Churches - West Side
- Nancy Savoie, Resident, Crescent Valley Neighbourhood
- Janet Scott, Enterprise Saint John
- Donnie Snook, Inner City Youth Ministry/Saint John Common Council
- Carolyn Van derVeen, Irving Oil
- Pat Woods, City of Saint John
- Cathy Wright, VCSJ

Breaking the Poverty Cycle in Saint John

A community framework for action

Help every child succeed – from cradle to career.



BCAPI 2012 Annual Business Dinner Sponsors

Host Sponsor

Fortis Properties

Event Sponsors

Avant-Garde Construction and Management Inc.

AVW –TELAV Audio Visual Solutions

Barry Spalding

Bell Aliant

The Bike Guyz @ Alternatives

Bird Construction Company

Brenan's Funeral Homes & Crematorium

Canadian Health Solutions

CANLink Aviation Inc.

Carleton Law Group

Cooke Aquaculture

Cox & Palmer

Credit Counselling Services of Atlantic Canada Inc.

Deloitte

Dowd Roofing Inc.

Dr. Jeff Clark

Drs. James and Anne O'Brien

Elias Management Group

Emera New Brunswick

Ernst & Young

Exhibition Association of the City and County of Saint John

eZ DOCK

Fundy Engineering & Consulting Ltd.

GLC Realty Ltd.

Grant Thornton

Greater Saint John Community Foundation

Gregor Hope

Irving Oil

J.D. Irving, Limited

John B. Wheatley and Associates

KPMG

Lawson Creamer

Mariner Partners Inc.

McInnes Cooper

Mitchell McConnell Insurance Ltd.

Nancy Creamer-Ervin, TD Waterhouse

Pure Symmetry Public Relations

RBC Dominion Securities Inc.

Revolution Strategy

Select Printing Ltd.

Sisters of Charity I.C.

Stantec Consulting Ltd.

Stewart McKelvey

T4G Limited

TD Waterhouse

Thank you, Everyone, for your contributions. Together, We ARE Making A Difference!

How to Help? Contact BCIPI

Business Community Anti-Poverty Initiative, P.O. Box 5777, Saint John, NB, Canada E2L 4M3

Tom Gribbons, Chair

tom.gribbons@rbc.com

Monica Chaperlin, Coordinator

chaperlin.monica@jdirving.com

Tel: (506) 633-5588 Fax: (506) 634-4245

WE MUST REFUSE TO FAIL